

Properties	Sureshield or Industrial Terrazzite, Decorative Terrazzite	Sureshield ZV	Nuthane SB	Surechem VE	Supascreed	RapidFloor MMA
<b>Description</b>	Hard wearing, chemical resistant, monolithic, 9mm thick resin floor topping.	Hard wearing, chemical resistant, monolithic, 8mm thick resin floor topping. FAST cure	Hard wearing, chemical resistant, monolithic, 6.5mm thick resin floor topping.	Hard wearing, chemical resistant, monolithic, 6mm thick resin floor topping.	Hard wearing, chemical resistant, monolithic, 6mm thick resin floor topping.	Medium wearing 3mm floor topping
<b>Resin Type</b>	Polyester; low emission	Polyester - Zero emission	Polyurethane	Vinyl Ester	Epoxy	MMA
<b>Nominal Thickness</b>	8-9mm Sureshield 6mm Terrazzite	8mm	Std. 6mm 4,6 or 8mm	6mm min	6mm, or 3 to 6mm	2-3mm
<b>Abrasion Resistance ASTM H22 abrasive wheels, 1kg load</b>	1000 cycles. Abrasive wear index 68	1000 cycles. Abrasive wear index 68	1000 cycles. Abrasive wear index 75	1000 cycles. Abrasive wear index not tested	1000 cycles. Abrasive wear index not tested	N/A
<b>Temperature ranges Installation: In-service:</b>	+10°C -30°C to +100°C	+10°C -30°C to +100°C	+10°C -30°C to +90°C	+10°C -30°C to +115°C	+10°C -30°C to +65°C	-20°C -30°C to +65°C
<b>Absorption (ASTM D570)</b>	0.047%	0.047%	0.04%	0.04%	0.04%	N/a, low
<b>Chemically Resistant #1 Hot oil resistance</b>	Yes, High	Yes, High	Yes, High	High Very high	Yes Med—low	Yes low
<b>Permeability NZS2130</b>	No measurable permeability	No measurable permeability	No measurable permeability	No measurable permeability	No measurable permeability	No measurable permeability
<b>Non-slip, wet</b>	Steel Float: 0.46 Glass Float: 0.58 Aggregate: 0.73	Steel Float: 0.46 Glass Float: 0.58 Aggregate: 0.73	Non-slip	Non-slip	Non-slip	Non-Slip
<b>Minimum time into service</b>	12hrs / 4hrs light duty	9hrs / 2hrs light duty	12hrs / 6hrs light duty	12hrs / 4hrs light duty	24hrs / 8hrs light duty	3-4hrs
<b>Thermal Shock Resistance</b>	Excellent	Excellent	Excellent	Excellent	High	High

Cont... Properties	Sureshield or Industrial Terrazzite, Decorative Terrazzite	Sureshield ZV	Nuthane SB	Surechem VE	Supascreed	RapidFloor MMA
Application to damp surfaces	No	No	Yes	No	Yes	No
Odour during Installation	Yes	No	No	Yes	No	Yes
Colour	Natural gold or may be tinted or blended with coloured aggregates	Natural gold or may be tinted or blended with coloured aggregates	Solid colours: Red, Tan, Yellow, Grey, green	Natural Gold	Natural gold or may be tinted or blended with coloured aggregates	Various
Control Joints	1.C81 non-control joints 2.K130 epoxy for control joints	1.C81 non-control joints 2.K130 epoxy for control joints	1. C81 non-control joints 2. K130 epoxy for control joints	1. C81 non-control joints 2. K130 epoxy for control joints	K130 epoxy	K130 Epoxy
Application Process	Primer + Trowelled screed + Topcoat	Primer + Trowelled screed + Topcoat	Slurry Screed + topcoat	Primer + Trowelled screed + Topcoat	Primer + Trowelled screed + Topcoat	Primer + Rolled base / Broadcast & topcoat
Coves	Yes, integral part of trowelling process	Yes, integral part of trowelling process	Must be pre-formed in other resin base; eg Supascreed	Yes, integral part of trowelling process	Yes, integral part of trowelling process	Must be pre-formed in other resin base; eg Supascreed
Cost / m <sup>2</sup> ; approx.	\$115	\$130	\$125	\$145	\$130	\$100but thin topping

Inquiries call: 0508-882288 within NZ - within Australia freecall: 1800 007 322  
Nuplex Construction Products [www.nuplexconstruction.co.nz](http://www.nuplexconstruction.co.nz)  
Australia: [www.nuplexconstruction.com.au](http://www.nuplexconstruction.com.au)

#1 , refer to chemical resistance chart.

## Installation Applicators

The installation should be carried out by a Nuplex Contractor Federation Applicator.



For full contractor details please visit our web site:  
[www.nuplexconstruction.co.nz](http://www.nuplexconstruction.co.nz)

## Model Specification:-

**Product:** Sureshield, Sureshield ZV,  
Nuthane SB, Surechem VE, Supascreed -  
delete one.

**Finish:** Medium Texture / Heavy Texture  
(delete as appropriate)

**Thickness:** .....mm (4mm 6mm 9mm)  
(insert as appropriate)

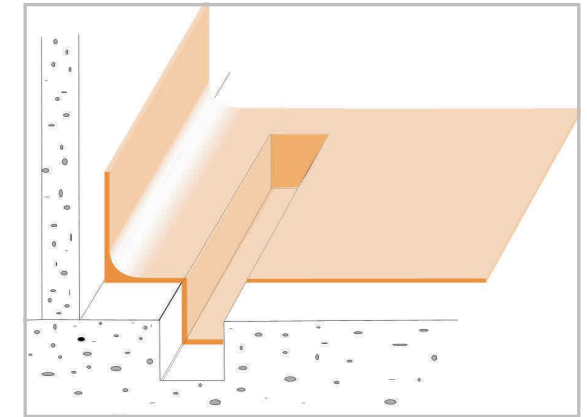
**Colour:** Natural, Red, Green, Grey, Tan.  
(etc. insert as appropriate)

**Preparation:** All preparation to be carried out in accordance with specific Nuplex instructions.

**Supplier:** Nuplex Construction Products  
Tel 09 580 0883

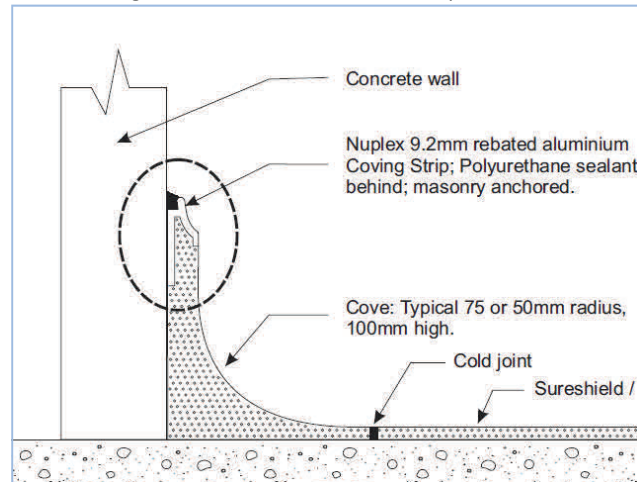
**Products:** Select resin system components from individual techdata sheets.

Nuplex floor toppings fulfil every part of the resin flooring range.  
Installation detailing is on the website.

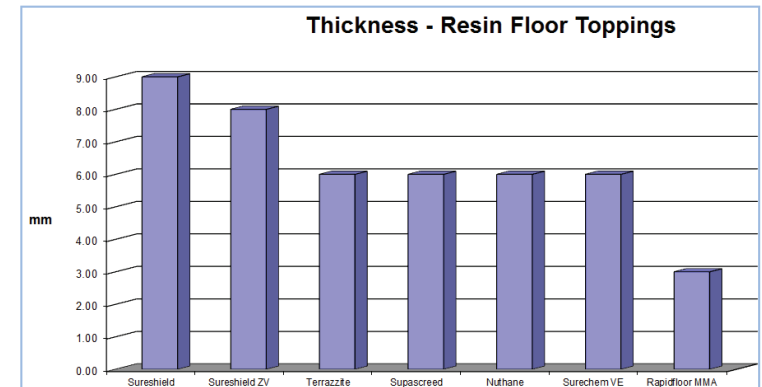


Nuplex resin systems are applied by trowel or slurry & broadcast methods to the horizontal areas. The verticals, coves and drains, are formed in trowel-able resins. Then all horizontal and vertical areas are topcoated .

Full detailing as below is available on the Nuplex website.



## Thickness - Resin Floor Toppings



## Slip & Durability Statement For Compliance with NZ Building Code

The products systems and application of Nuplex Resin Systems comply with the requirements of the NZ Building Industry Authority and related acts.

In particular two items of key importance are complied with. These are **slip resistance** and **durability, of the Building regulations D1 & B2.** The warranties implied by the durability code are accepted and complied with. The factors required by the slip resistance code are also complied with except as outlined in specifications and technical data. **E3 Internal water** also applies if the toppings are used for internal floors above structures.

This specification is to be read in conjunction with relevant product information, technical data, material safety data sheets etc, and conditions of contract which may be issued by the client.