

TERRAFLAKE 200

Decorative Flake Coating System

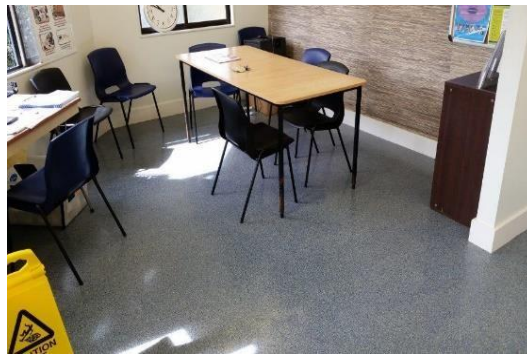
DESCRIPTION:

Terraflake 200 is a two-pack epoxy with bonded coloured plastic chips, encapsulated within a clear topcoat. Terraflake 200 is a medium build coating system suitable for application in both interior | exterior situations to residential and light commercial areas. Terraflake 200 gives a smooth glossy finish with excellent wear resistance.

TYPICAL FEATURES | BENEFITS



- Epoxy resin base-coat gives excellent concrete penetration and adhesion
- Available in various slip-resistance options
- Clear topcoat options for different applications *Refer: Topcoat Glaze Coat Options- Below*
- Excellent adhesion to properly prepared substrates.
- Very good abrasion and scuff resistance.
- Excellent slip resistance. Specification is needed of the degree required. *Refer: Terraflake 200 Surface Finish | Non-Slip Options – Below.*
- Cured Film is non-toxic.
- Not moisture permeable.
- Attractive Surface Finish – High gloss.
- Follows contours of upstands and coves.
- Moderate chemical resistance.
- Colour: See colours listed below.



COLOURS:

The flake is available in one size which contains a graded flake size mix. They are supplied in a range of colours which are blended by your contractor to your colour choices. **Also the HYBRID STONE RANGE of colours emulating various natural stone appearances.**



Hybrid Stone "Agate"



Hybrid Stone "Limestone"



Hybrid Stone "Slate"



Basalt



Hardtack



Outback



Keyz



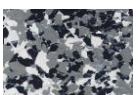
Silhouette



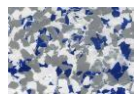
Mamba



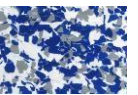
Checker



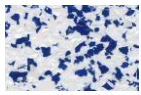
Pitch



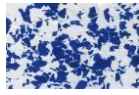
Greymist



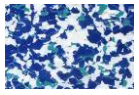
Bass



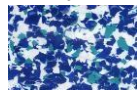
Broadbeach



Tasman



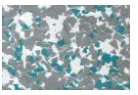
Glacier



Oceania



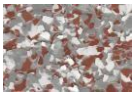
Huka



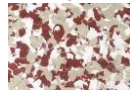
Whio



Gravel



Autumn



Bauxite



Caramel

PERFORMANCE DATA:

Properties		Values	
Minimum Thickness:		0.9mm	
Minimum Application Temperature: Air		+10°C	
Maximum Application Relative Humidity: Air		85%	
In-service Temperatures - Wet : on fully cured system:		-20 to +55°C	
Critical Radiant Flux:		5.1 Kw/m ² .	
Chemical Resistance:		Resistant to chemical spillage –cured 7 days at +25°C. <i>Refer: Chemical Resistance charts for: Various Glaze Options</i>	
Heat Resistant:		+55°C	
Slip Resistance:		R11 to R13. <i>Refer: Slip resistance chart</i>	
Surecote 200 Primer - Touch Dry	~ Ready for Flake Application	+14°C ~ 75%RH +25°C ~ 75%RH	5.2 hours 3 hours
Glaze coat over flaked Surecote 200 Basecoat:		+25°C ~ 70%RH	16 hours
Hard Dry:		+20°C ~ 75%RH	10 hours
Recoat Time:	~ Nuthane Topcoat Gloss - Clear ~ Revathane	+20°C ~ 75%RH	1 hour per coat * <i>Dependent on air flow*</i> 6 -8 hours
Light Foot Traffic: Finished System		+25°C ~ 75%RH	12 Hours
Full Use: Finished System		+25°C ~ 75%RH	72 Hours
Full Chemical Resistance: Finished System		+25°C ~ 75%RH	7 days

RECOMMENDED USES:

- Ablution areas.
- Retail: shops, offices.
- Construction and Mining Industry.
- Patios, decks, steps, carports etc.
- Chemical and Oil Industry.
- Schools.
- As an applied coating to concrete, plaster, fibre cement sheeting, and plywood substrates.
- Sports rooms: changing rooms, wet areas.
- Residential garages and workshops.
- Dairy sheds, factories, and food processing areas.
- Showrooms, foyers, display areas.
- Slip resistant floor finishes.
- Also, as wall finishes to hygiene areas.

LIMITATIONS:

- Application below +10°C.
- Application to incorrectly prepared surface.
- Application to green (uncured) concrete. *Allow 28 days. ** Will tolerate damp concrete**
- Areas subjected to severe chemical attack - *Refer DGL Bondlast Construction Products.*
- Heavy industrial wear areas - *Refer DGL Bondlast Construction Products.*
- Application to unsound substrates.
- Application over existing coatings – remove.

TERRAFLAKE SYSTEM TYPES:

System Step	System Type A	System Type B
Primer	Surecote 200	Surecote 200
Basecoat	Surecote 200	Surecote 200
Flakes	Flake Blend	Flake Blend
Topcoats	Nuthane Topcoat Gloss - Clear	Revathane

TERRAFLAKE 200 GLAZE OPTIONS:

Nuthane Topcoat Gloss - Clear	Revathane <i>Recommended & Preferred Topcoat</i>
Interior/exterior	Interior/exterior
Suitable for most applications Do not use in cold, damp situations. Long term exposure to extreme UV may cause yellowing. Best applied in conditions with good air movement to assist in drying. Overcoat time 1 hour in good drying conditions. Three (3) coats required if using non-slip additives	Aliphatic, UV protected Solvent based :moisture cured polyurethane. Suitable for all applications but does have a very strong odour during application.
Theoretical Film Build ~ Minimum 250 microns ~ 2 x coats	Theoretical Film Build ~ Minimum 250 microns ~ 3 x coats

SURFACE FINISH DESIGN OPTIONS:

System Type	Description	Description	CF Rating	SRV Rating	R Rating	Non-Slip
	Installation Type	Finish Type	NZ/AS3661.1 1993	AS/NZS 4586		Application Rates
Type A	Roller applied	Smooth	0.46	43	R11	N/A
Non-Slip Class 1	Roller applied with the addition of:- ~ Microcells	Fine/Medium duty: Fine non-slip	0.56	53	R12	Microcells: mixed in the material and applied in the second to last Coat: Revathane @150grams / 4 Litre Aquaglaze UV @150grams / 4 Litre Rapidcote @ 50grams / 4 Litre
	~ Revtred	Fine-Medium non-slip				Revtred: Broadcast into the second to last coat 12 grams / m2
Non-Slip Class 2	Heavy: non-slip: Note Well* Use of the following aggregates will change/discolour the appearance of the Terraflake system and other option are likely to be more suitable. Refer: DGL Bondlast Construction Products for advice.	Heavy duty Aggregate:				
	~ Q900	Fine /Medium – garnet	0.73	64	R13	1.0 kg / m2 These non-slip aggregates are broadcast into the first wet coat
	~ Walton Park 18/36	Medium-round silica	0.73	64		
	~ Aluminium Oxide 16 grit	Coarse- sharp/angular	0.75	65		
	~ Walton Park 7/14	Coarse- round silica	0.75	65		
	~ Aluminium Oxide 12 grit	Very coarse -sharp	0.75	65		

SUBSTRATE: – Preparation

All substrates shall be stable and solid.

Note

All control joints, junctions, cracks in the substrate etc. are to be properly treated.

CONCRETE:

Shall have a surface which has been mechanically trowelled to AS3610:1995 U3/NZ/3114:1987U3 finish.

A minimum compressive strength of 25MPa at 28 days cure.

Substrate shall have a nominal pull-off strength of a min 1.5 N/mm2.

A minimum of 28 days prior to the installation of Terraflake.

The moisture content shall be less than 75% RH. (Refer: DGL Bondlast Construction Products Bulletin on application options for wet or uncured concrete).

PLYWOOD | TIMBER | FIBRECEMENT

Refer: Terraflake 200 Method Statement / Specification or Refer: DGL Bondlast Construction Products for specific advice.

COVE TOPS:

Install DGL Bondlast cove upper termination metal strips: (Refer: Typical Resin Flooring Details Document)



5.2mm



9.2mm

If the coving strip cannot be used, Refer: Resin Flooring Details Document for options.

RESIN FLOORING DETAILS

Refer: Typical Resin Flooring Details Document.

FALLS TO WASTES:

STZ Prefill system:- for adding falls | slope modification and floor angles.

STZ Prefill Types: Refer: STZ Prefill Technical Literature.

Normally for new work falls are laid in the concrete and fall to drains.

The falls must be specified pre-tender. (Terraflake 200 is a thin set coating system and prefill may involve significant extra materials).

However, in refurbishment situations the drains and falls may be incorrect - *Sometimes new drains are installed.*

The Prefill can be installed to any thickness to create falls.

If the project is a food processing facility, ensure that your requirements fall within the guidelines of current legislation.

The quantities of materials required to raise the floor height at wall perimeters is often underestimated.

To do this may involve significant extra costs and should be discussed and agreed.

It is quite common for STZ prefill system to be used under Terraflake 200 to create falls to drains and other filling applications.

Floor Fall Definitions	
1:50	Liquids will free run to drainage
1:80	Liquids will migrate to drainage
1:100	Some ponding of liquids will occur, squeegee to drainage will be required.

JOINTS:

All concrete control and construction joints should be carried through the Terraflake 200.

Jointing Options	
Control Construction Joints	Cold Joints Non-Movement Joints
K130 or Sabrebond SMP60	K130 or Sabrebond SMP60

QUALITY ASSURANCE:

The DGL Bondlast Approved Applicator shall ensure all QA checks have been undertaken prior to the installation process and subsequently during the installation process. The completed documentation must be made available to DGL Bondlast Construction Products, and the client/clients authorised personnel.

The product is to be installed within the required control range to ensure a fully cured, hard wearing monolithic floor coating system.

Information to be recorded daily is:	
Concrete sub-base or prefill mix.	Material batch numbers used.
Sequence of mixing, ratios, quantities, and formula.	Substrate moisture content & Substrate temperature.
Ambient temperature Ambient relative humidity.	Daily detail of licenced contractors on-site.

CLEANING & MAINTENANCE:

Cleaning:

Refer: Cleaning Maintenance Document

Repairs:

Can be undertaken with further new Terraflake 200 applied directly.

Resurfacing:

Refer: Terraflake Maintenance & Re-Sealing.

FIXING OF PLANT AND MACHINERY:

Mechanical fixings into the substrate must be resin fixed. This is to ensure that there is no water migration into the substrate.

Conventional expanding plugs, screws or anchors are not an acceptable fixing method.

PRODUCER STATEMENT:

DGL Bondlast Construction Products state that: -		
Terraflake 200 is compliant with:		
HACCP International Certification.	E3 Internal water 3.1.1e	D1 Access routes / slip resistance wet & dry.

HEALTH & SAFETY: Refer: safety data sheets (SDS).

- Applicators are to comply with all current legislation when using this product.

Date: Jan 2025
Replaces June 2024

DGL Bondlast Construction Products, a Division of DGL Manufacturing NZ

Auckland Office: 24-28 Lady Ruby Drive, East Tamaki, phone: 09-267-2772

Auckland Trade Store: 308 Church Street, Penrose, phone: 09-583-6258.

Hamilton Trade Store: 18 Somerset Street, Frankton, phone: 07-847-8658.

Wellington Trade Store: Unit 9A, 4 Glover Street, Ngauranga Gorge, phone: 04-240-0305.

Christchurch Trade Store: 112 Carlyle Street, Sydenham, phone: 03-366-6802.

Customer Service: 0508-882-288 sales.bondlast.cp@dglgroup.com

Website: www.bondlastconstruction.com

DISCLAIMER: This information appearing in this Document (**Details**) concerning the product which is the subject of the Document (**Product**) is either based on present technical knowledge and tests done by Bondlast or tests done by, and data supplied from third parties including you, the customer. Since the actual use by you and by others of the Product is beyond the control of Bondlast, no warranty or representation, express or implied is made by Bondlast regarding the suitability for such use, nor does Bondlast accept any liability arising out of the use by you of other products or materials, whether third party or not, that may be referred to in this Document. Bondlast recommends that you conduct your own tests as to the suitability of the Product for your purpose, regarding which you accept full responsibility. In addition, if any of the Details appearing in the Document are based upon tests done by, and/or data supplied by any third party, Bondlast provides no warranties or representations in connection with those Details and you, the customer waives any right you may have against Bondlast in connection with the accuracy, completeness or otherwise of the Details. The information in this Document is not to be construed as absolutely complete or accurate since additional information may be necessary or desirable when particular or exceptional conditions or circumstances exist or because of applicable laws or government regulations affecting use of the Product. Bondlast does not provide any warranty or representation to you that the Product does not infringe the intellectual property rights of any third party. All orders accepted shall be subject to the standard conditions of sale of Bondlast which are on the back of our invoice. In accepting the Product, you, the customer acknowledges and agree **a.)** The Product is or may be of a hazardous nature and that you, the customer, are responsible for the disposal of the container housing the Product in accordance with the requirements and regulations of the relevant supervising government. **b.)** The Product has a limited shelf life and must be stored strictly in accordance with the guidelines and specifications related to it. **c.)** Where the Details relate to Product tested by Bondlast, those Details are indicative only, regarding which there may be batch to batch variation. **d.)** Bondlast gives no warranty or representation as to the applicability for the particular use by you, the customer, of the Product and you the customer shall be responsible for ensuring that the Product is fit for your intended use. **e.)** Bondlast's liability for breach of any term, condition, guarantee or warranty (express or implied and concerning the information in this Document or the Product more generally) including any liability for direct or indirect consequential loss (including indirect loss of profits), is limited to the maximum extent permitted by law and, at Bondlast's election, to either replacing or repairing the goods or paying the cost of replacing or repairing the goods, or in the case of services, supplying the services again.