

TERRATUFF

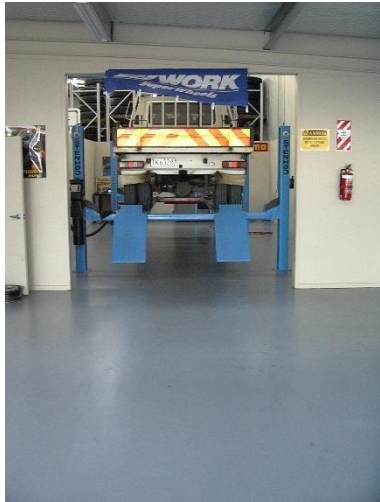
Epoxy Coating System

DESCRIPTION:

Terratuff is a two-pack coloured epoxy floor coating system. Terratuff gives a smooth glossy finish with excellent wear resistance. It is a general purpose epoxy floor coating designed for commercial and industrial applications.

Terratuff is a medium build epoxy coating system suitable for application to a wide variety of floor and wall substrates and including concrete and steel.

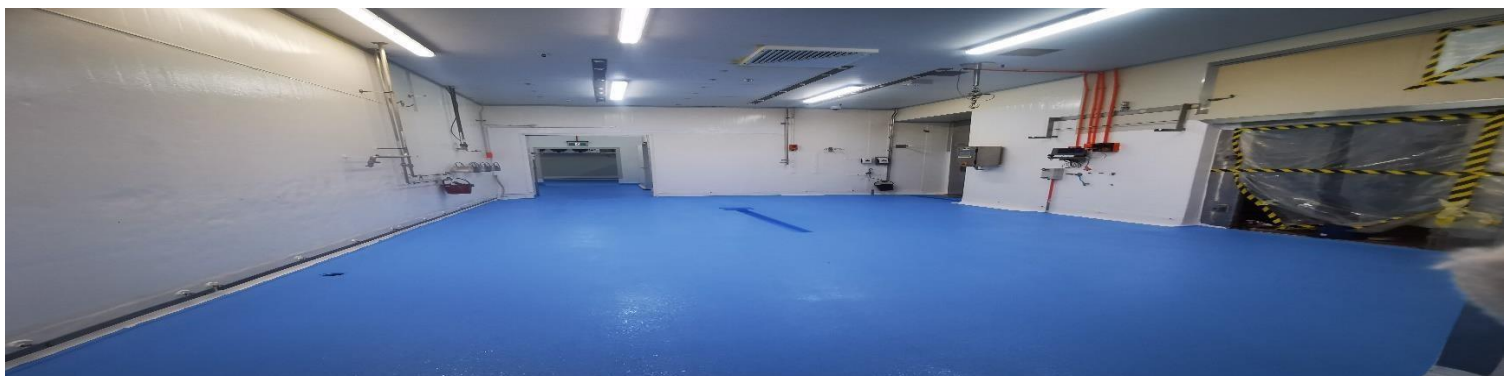
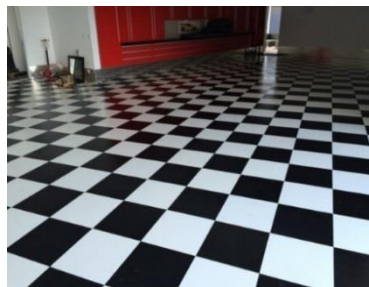
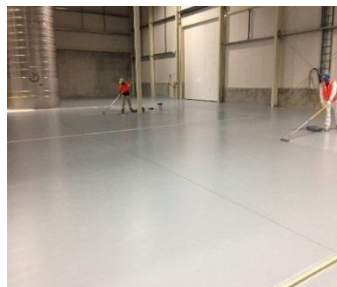
TYPICAL FEATURES | BENEFITS



- Solvent based resin gives excellent concrete penetration and adhesion.
- Available in various slip resistance options.
- May be used in food safe areas.
- Very good abrasion and scuff resistance.
- Tolerant of application to a slightly damp surface.
- Excellent adhesion to properly prepared substrates.
- Easily cleaned.
- Excellent slip resistance. *Specification is needed of the degree required.*
Note Please read detail contained within document.*
- Cured Film is non-toxic.
- Not moisture permeable.
- Colour: Available in a wide range of colours.
- Attractive Surface Finish – medium gloss.

Note*

*For higher film builds refer:- Surecote 200 or the Surecote 200 Vessca SLE.
The Surecote 200 system is a non-odour system.*



TERRATUFF SURFACE FINISH DESIGN OPTIONS:

Terratuff can be applied as a smooth surface or profiled non-slip application.

The degree of the surface profile is determined by the non-slip requirement for the environment.

Refer: *Terratuff Method Statement / Specification.*

For specific advice. Refer: *DGL Bondlast Construction Products.*

COLOURS:

Terratuff stocked colour is N35 light Grey.

Terratuff is available in many colours in the following charts:

BS5252: Colour Chart | AS2700: Colour Chart | RAL: colours & special colours are also available.

PERFORMANCE DATA:

Properties	Values
Minimum Thickness:	2 x coats Smooth Finish 166 microns 3 x coats Smooth Finish 250 microns
Minimum application temperature: Air	+5°C
Maximum Application Relative Humidity: Air	85%
In-service temperatures - Wet : on fully cured system:	-10 to +60°C
Critical Radiant Flux:	12.3 Kw/m ² .
Chemical Resistance:	Resistant to chemical spillage –cured 7 days at +25°C. <i>Refer: Chemical resistance chart</i>
Heat resistant:	+60°C
Slip resistance:	R11 to R13. <i>Refer: Slip resistance chart</i>
Hard Dry:	+20°C ~ 75%RH
Recoat Time:	~ Minimum ~ Maximum
Full Use: Finished System	+25°C ~ 75%RH
Full Chemical Resistance: Finished System	+25°C ~ 75%RH

RECOMMENDED USES:

- Ablution areas.
- Bulk retail.
- Construction and Mining Industry.
- Chemical and Oil Industry.
- Food processing facilities.
- Pulp and Paper mills.
- Refineries.
- Residential garages and workshops.
- Sewerage treatment plants.
- Silos.
- Slip resistant floor finishes.
- Warehouses.

LIMITATIONS:

- Application below +5°C.
- Application to green (uncured) concrete. Allow 28 days.
**** Will tolerate damp concrete****
- Weathering/UV - ** Some chalking will occur in time but will maintain good film integrity. * Some yellowing will occur.*
- Application to unsound substrates.
- Application to incorrectly prepared surface.

SURFACE FINISH DESIGN OPTIONS:

System Type	Description	Description	CF Rating	SRV Rating	R Rating	Examples
	Installation Type	Finish Type	NZ/AS3661.1 1993	AS/NZS 4586		Completely homogeneous floor areas
Type A	<i>Roller applied</i>	Smooth	0.46	43	R11	Dry areas Garages Clean Rooms
Non-Slip Class 1	<i>Roller applied with the addition of:-</i> <i>~ Microcells</i> <i>~ Revtred</i>	Fine/Medium duty non-slip: Fine non-slip Fine-Medium non-slip	0.56	53	R12	Light wet areas Garages Clean Rooms
Non-Slip Class 2	<i>Applied with the addition of:-</i> <i>~ J61</i> <i>~ Q900</i>	<i>Heavy duty Aggregate: non-slip:</i> Fine – Silica Sand Fine – Medium garnet	0.63 0.73	57 64	R12 R13	Medium duty Butchery Abattoirs Fish Processing Veg Processing

CHEMICAL RESISTANCE CHART:

Test Procedure	Observation	Results
Spot Testing.	Checked for chemical attack and hardness throughout the testing period.	Taken at times specified.

Test Media	Concentration	Time Lapse			Test Media	Concentration	Time Lapse		
		1	3	6			1	3	6
		Hour	Hours	Hours			Hour	Hours	Hours
ACIDS					ALKALIS				
Hydrochloric Acid	10%	N	N	N	Potassium Hydroxide	30%	N	N	N
Sulphuric Acid	10%	N	N	N	Caustic Soda	50%	N	N	N
Sulphuric Acid	25%	N	N	N					
Acetic Acid	10%	N	SM	SM					
Acetic Acid	50%	MH	MH	MH	SOLVENTS				
Nitric Acid	10%	SM	SM	MH	Toluene		SM	-	-
Citric Acid	10%	N	N	N	Acetone		SM	-	-
Lactic Acid	90%	SM	MH	MH	Isopropanol		REC	-	-
Phosphoric Acid	30%	SM	SM	SM	Methanol		REC	-	-
PETROCHEMICALS					DISINFECTANTS CLEANERS				
Kerosene		N	N	N	Ammonia Solution	25%	N	N	N
Industrial Gear Lubricant (Mobil 632)		N	N	N	Iodine (Betadine Solution)	10%	REC	REC	REC
Petrol 91 Unleaded		N	-	-	Bleach	2.15%	N	N	N
Fuel Oil – Diesel Oil		N	N	N	Dishwashing Liquid	100%	N	N	N
Hydraulic Fluid (Hyspin AWS646 - Castrol Oil)		N	N	N	MEKP – M50		N	N	N
OTHERS					SALT SOLUTION				
Food Emulsion (Milk)		N	N	N	Brine	20%	N	N	N

LEGEND:

N	No Mark No Effect	SM	Slightly Marked
D	Damaged Blistered	MH	Marked Heavily
REC	Recovered <i>(there was something there after removing the chemical, but it recovered quickly to undetectable)</i>	EF	Evaluate Further

Solutions are Aqueous unless otherwise stated

Note

Variables which may under extreme conditions, influence the chemical or corrosion resistance are:

- *Temperature of chemical concentration.*
- *Application in adverse conditions.*
- *Intermittent or continuous contact.*
- *Risks of evaporation from spillage causing concentration to rise adversely.*

SUBSTRATE: – Preparation

All substrates shall be stable and solid.

Note

All control joints, junctions, cracks in the substrate etc. are to be properly treated.

CONCRETE:

Shall have a surface which has been mechanically trowelled to AS3610:1995 U3/NZ/3114:1987U3 finish.

A minimum compressive strength of 25MPa at 28 days cure.

Substrate shall have a nominal pull-off strength of a min 1.5 N/mm².

A minimum of 28 days prior to the installation of Terratuff

The moisture content shall be less than 75% RH. *(Refer: DGL Bondlast Construction Products Bulletin on application options for wet or uncured concrete).*

PLYWOOD | TIMBER | FIBRECEMENT

Refer: Terratuff Method Statement / Specification or Refer: DGL Bondlast Construction Products for specific advice.

COVE TOPS:

Install DGL Bondlast cove upper termination metal strips: *(Refer: Typical Resin Flooring Details Document)*



5.2mm



9.2mm

If the coving strip cannot be used, Refer: Resin Flooring Details Document for options.

RESIN FLOORING DETAILS

Refer: Typical Resin Flooring Details Document.

FALLS TO WASTES:

STZ Prefill system:- for adding falls | slope modification and floor angles.

STZ Prefill Types: Refer: STZ Prefill Technical Literature.

Normally for new work falls are laid in the concrete and fall to drains.

The falls must be specified pre-tender. *(Terratuff is a thin set coating system and prefill may involve significant extra materials).*

However, in refurbishment situations the drains and falls may be incorrect - **Sometimes new drains are installed.**

The Prefill can be installed to any thickness to create falls.

If the project is a food processing facility, ensure that your requirements fall within the guidelines of current legislation.

The quantities of materials required to raise the floor height at wall perimeters is often underestimated.

To do this may involve significant extra costs and should be discussed and agreed.

It is quite common for STZ prefill system to be used under Terratuff to create falls to drains and other filling applications.

Floor Fall Definitions	
1:50	Liquids will free run to drainage
1:80	Liquids will migrate to drainage
1:100	Some ponding of liquids will occur, squeegee to drainage will be required.

JOINTS:

All concrete control and construction joints should be carried through the Terratuff.

Jointing Options	
Control Construction Joints	Cold Joints Non-Movement Joints
K130 or Sabrebond SMP60	K130 or Sabrebond SMP60

QUALITY ASSURANCE:

The DGL Bondlast Approved Applicator shall ensure all QA checks have been undertaken prior to the installation process and subsequently during the installation process. The completed documentation must be made available to DGL Bondlast Construction Products, and the client/clients authorised personnel.

The product is to be installed within the required control range to ensure a fully cured, hard wearing monolithic floor coating system.

Information to be recorded daily is:	
Concrete sub-base or prefill mix.	Material batch numbers used.
Sequence of mixing, ratios, quantities, and formula.	Substrate moisture content & Substrate temperature.
Ambient temperature Ambient relative humidity.	Daily detail of licenced contractors on-site.

CLEANING & MAINTENANCE:

Cleaning:

Refer: Cleaning Maintenance Document

Repairs:

Can be undertaken with further new Terratuff applied directly.

Resurfacing:

Smooth System:

- Re-surfacing with further coats of Terratuff.

Profiled | Non-Slip System:

- Terratuff Non-Slip which will reinstate the non-slip properties or add non-slip to a previously smooth surface finish.

(Refer: DGL Bondlast Construction Products for advice on the suitability of the options for the chosen environment)

FIXING OF PLANT AND MACHINERY:

Mechanical fixings into the substrate must be resin fixed. This is to ensure that there is no water migration into the substrate. Conventional expanding plugs, screws or anchors are not an acceptable fixing method.

HEALTH & SAFETY: Refer: safety data sheets (SDS).

- Applicators are to comply with all current legislation when using this product.

Date: Jan 2025
Replaces June 2024

DGL Bondlast Construction Products, a Division of DGL Manufacturing NZ

Auckland Office: 24-28 Lady Ruby Drive, East Tamaki, phone: 09-267-2772

Auckland Trade Store: 308 Church Street, Penrose, phone: 09-583-6258.

Hamilton Trade Store: 18 Somerset Street, Frankton, phone: 07-847-8658.

Wellington Trade Store: Unit 9A, 4 Glover Street, Ngauranga Gorge, phone: 04-240-0305.

Christchurch Trade Store: 112 Carlyle Street, Sydenham, phone: 03-366-6802.

Customer Service: 0508-882-288 sales.bondlast.cp@dglgroup.com

Website: www.bondlastconstruction.com

DISCLAIMER: This information appearing in this Document (**Details**) concerning the product which is the subject of the Document (**Product**) is either based on present technical knowledge and tests done by Bondlast or tests done by, and data supplied from third parties including you, the customer. Since the actual use by you and by others of the Product is beyond the control of Bondlast, no warranty or representation, express or implied is made by Bondlast regarding the suitability for such use, nor does Bondlast accept any liability arising out of the use by you of other products or materials, whether third party or not, that may be referred to in this Document. Bondlast recommends that you conduct your own tests as to the suitability of the Product for your purpose, regarding which you accept full responsibility. In addition, if any of the Details appearing in the Document are based upon tests done by, and/or data supplied by any third party, Bondlast provides no warranties or representations in connection with those Details and you, the customer waives any right you may have against Bondlast in connection with the accuracy, completeness or otherwise of the Details. The information in this Document is not to be construed as absolutely complete or accurate since additional information may be necessary or desirable when particular or exceptional conditions or circumstances exist or because of applicable laws or government regulations affecting use of the Product. Bondlast does not provide any warranty or representation to you that the Product does not infringe the intellectual property rights of any third party. All orders accepted shall be subject to the standard conditions of sale of Bondlast which are on the back of our invoice. In accepting the Product, you, the customer acknowledges and agree **a.)** The Product is or may be of a hazardous nature and that you, the customer, are responsible for the disposal of the container housing the Product in accordance with the requirements and regulations of the relevant supervising government. **b.)** The Product has a limited shelf life and must be stored strictly in accordance with the guidelines and specifications related to it. **c.)** Where the Details relate to Product tested by Bondlast, those Details are indicative only, regarding which there may be batch to batch variation. **d.)** Bondlast gives no warranty or representation as to the applicability for the particular use by you, the customer, of the Product and you the customer shall be responsible for ensuring that the Product is fit for your intended use. **e.)** Bondlast's liability for breach of any term, condition, guarantee or warranty (express or implied and concerning the information in this Document or the Product more generally) including any liability for direct or indirect consequential loss (including indirect loss of profits), is limited to the maximum extent permitted by law and, at Bondlast's election, to either replacing or repairing the goods or paying the cost of replacing or repairing the goods, or in the case of services, supplying the services again.